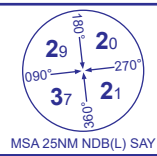


INSTRUMENT APPROACH CHART - ICAO

STORNOWAY  
LOC/DME/NDB(L)  
RWY 18  
(ACFT CAT A,B,C,D)



MSA 25NM NDB(L) SAY

APP	119.480	STORNOWAY APPROACH	AD ELEVATION	26
TWR	119.480	STORNOWAY TOWER	THR ELEVATION	16
AFIS	119.480	STORNOWAY INFORMATION	OBSTACLE ELEVATION	1233 AMSL (1217) (ABOVE THR)
ATIS	115.100	STORNOWAY INFORMATION	BEARINGS ARE MAGNETIC	

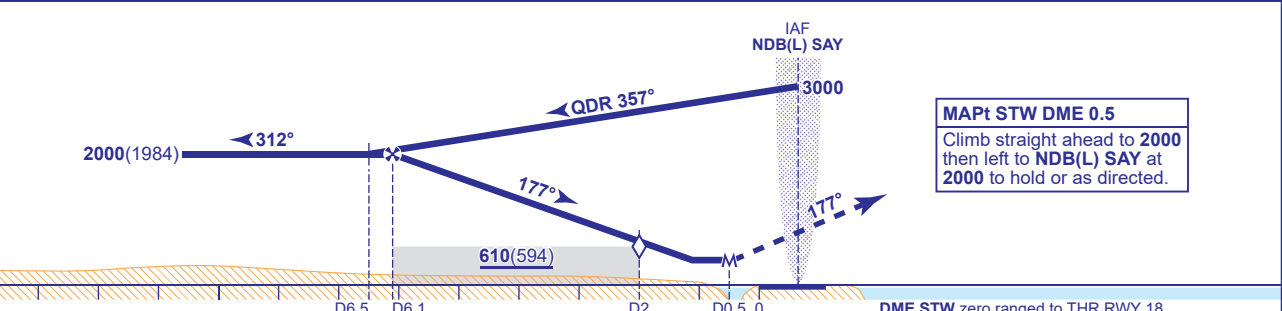
TRANSITION ALTITUDE  
3000



VAR 2.9°W - 2022  
N  
Annual Rate  
of Change 0.24°E

RECOMMENDED PROFILE Gradient 5.2%, 320FT/NM

DME STW	5	4	3	2 (SDF)	1
ALT(HGT)	1650(1634)	1330(1314)	1020(1004)	700(684)	380(364)



Aircraft Category		A	B	C	D	Rate of descent	G/S KT	160	140	120	100	80
OCA (OCH)	LOC/DME	390(374)	390(374)	390(374)	390(374)		FT/MIN	850	740	630	530	420
VM(C)OCA (OCH AAL)	Total Area	500(474)	630(604)	860(834)	1060(1034)							
	East of RWY 18/36	500(474)	530(504)	690(664)	770(744)							

ALTERNATIVE PROCEDURE EXTENDED HOLDING PATTERN  
Overhead NDB(L) SAY (IAF) at 3000(2984) extend the outbound leg of the holding pattern descending to 2000(1984). At STW DME 9 (CAT A,B); STW DME 10 (CAT C,D), turn right onto LOC and continue as for basic procedure.

- NOTE 1 Lowest altitude to commence procedure from hold is 2000.  
2 Direct arrivals are detailed on AD 2-EGPO-8-5.  
3 Initial approach from VOR/DME STN is detailed on AD 2-EGPO-8-4.

CHANGE (8/22): LOC/DME STW CALLSIGN CORRECTED.